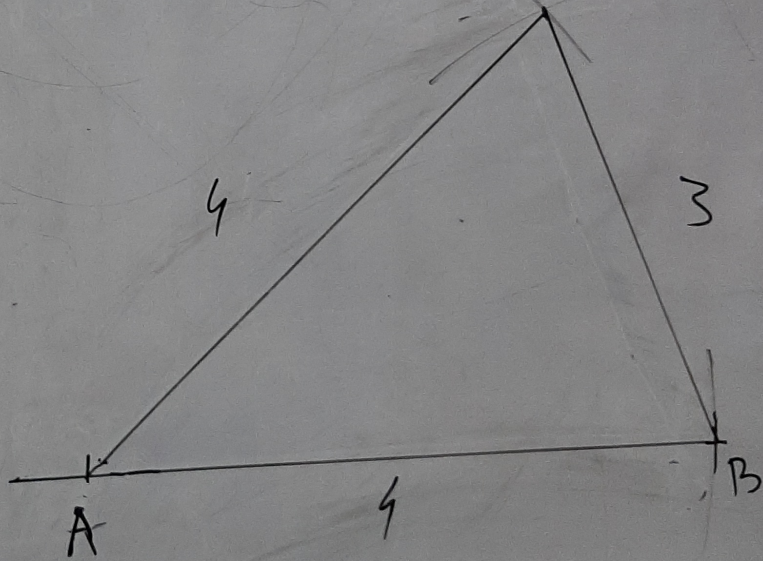
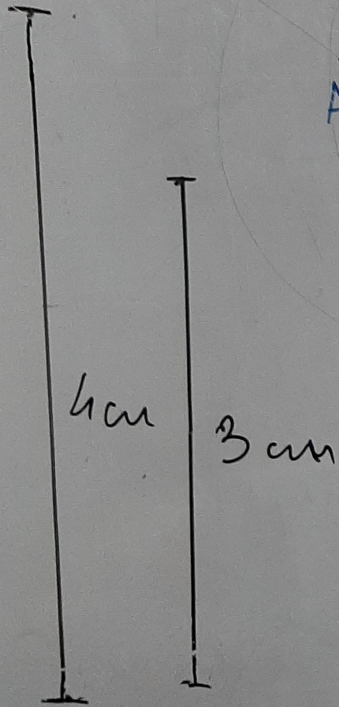
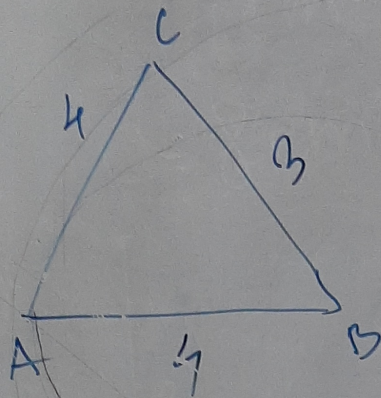


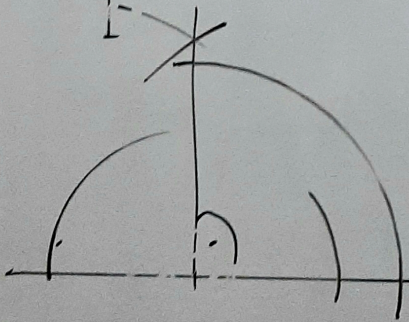
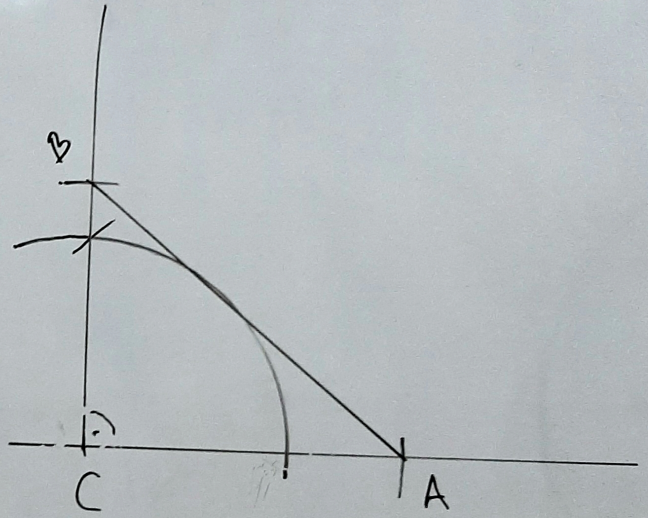
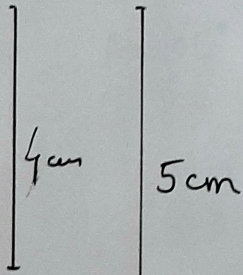
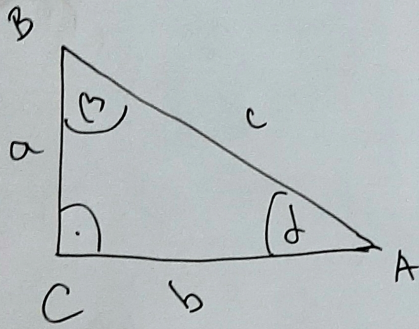
359. $AC = AB = b = 4 \text{ cm}$

$BC = a = 3 \text{ cm}$

СЛУЧА

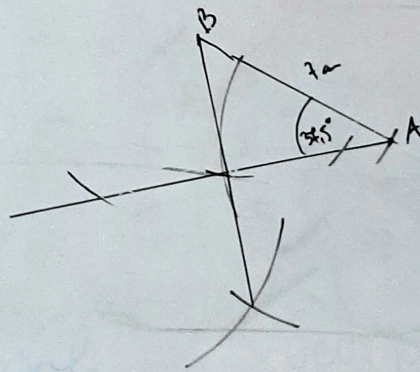
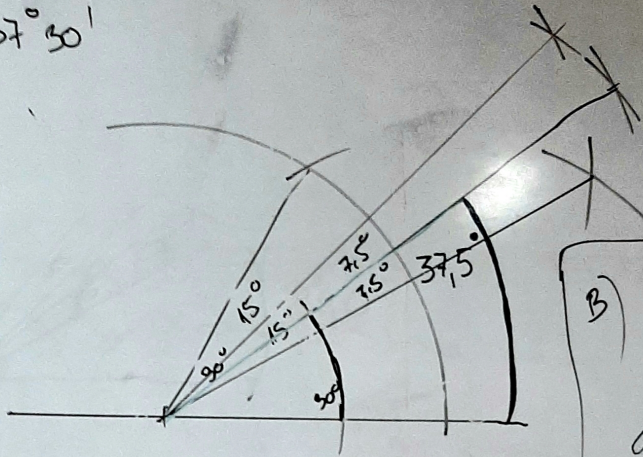
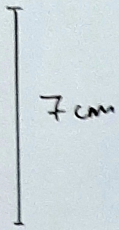


352. $a = 4\text{cm}$
 $b = 5\text{cm}$

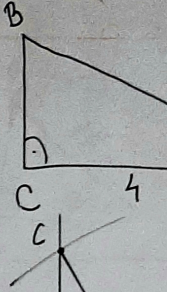
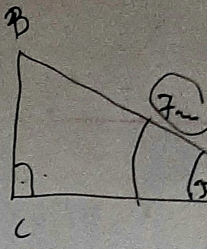
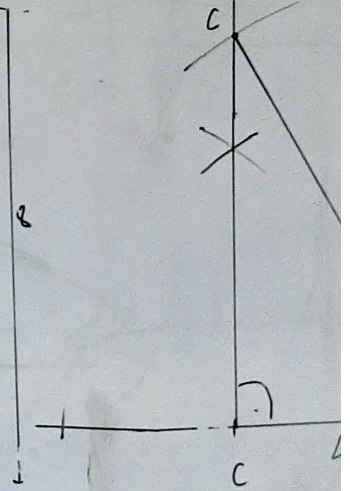
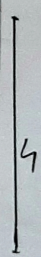


8) $c = 7 \text{ cm}$ $\alpha = 37^\circ 30'$

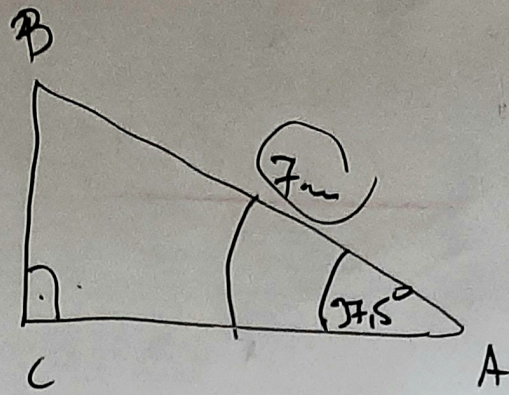
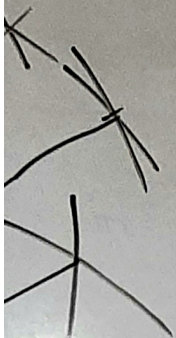
$\alpha = 97,5^\circ$



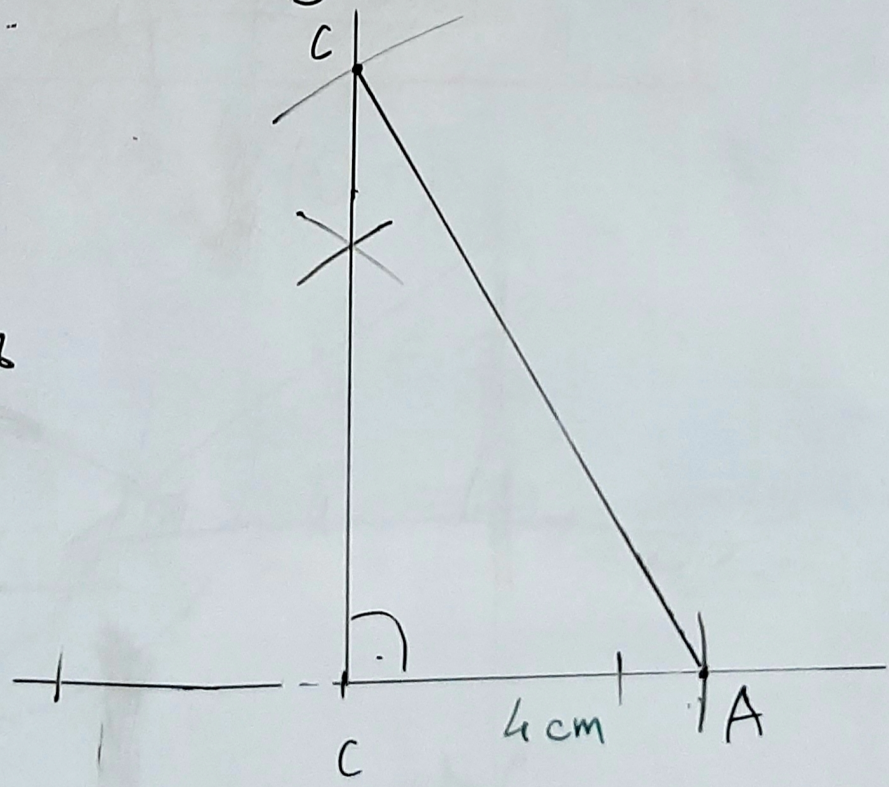
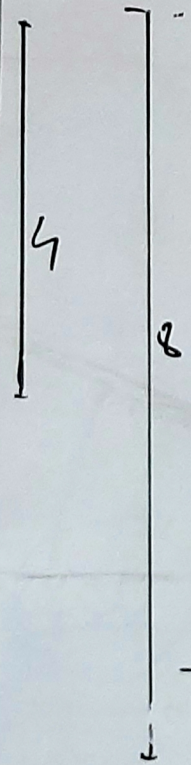
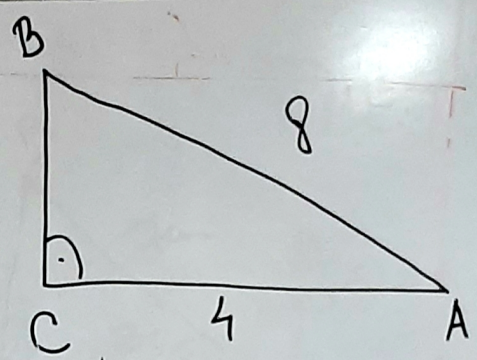
B) $b = 4 \text{ cm}$
 $c = 8 \text{ cm}$
 $\beta = 90^\circ$



X

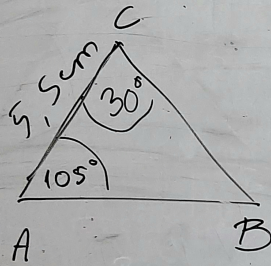


B) $b = 4\text{cm}$
 $c = 8\text{cm}$
 $\alpha = 90^\circ$



е - в е н б а б с

350. Г) $b = 5,5 \text{ cm}$ $\alpha = 105^\circ$ $\beta = 30^\circ$



$30^\circ = 60^\circ : 2$
 $105 = 90 + 15$
 $15 = 60 : 2 \quad 30 : 2$

