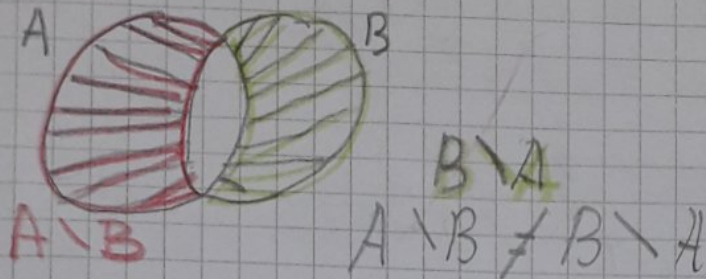
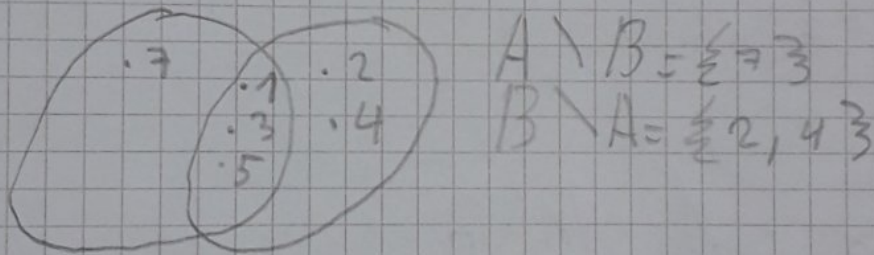


Разлику скупова A и B (ознака: $A \setminus B$)
 чине сви елементи који припадају скупу
 A и не припадају скупу B

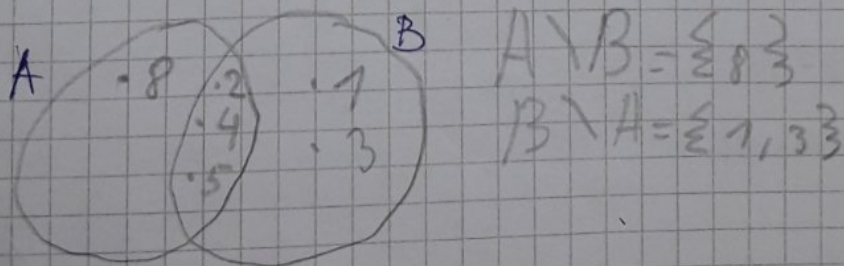


298.

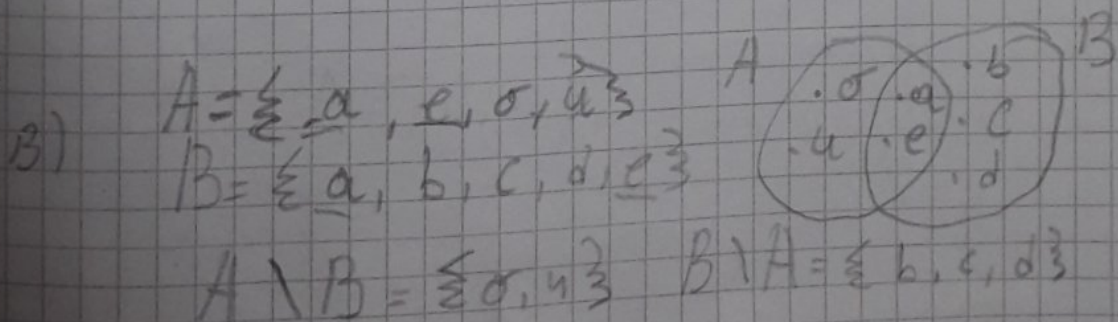
a) $A = \{1, 3, 5, 7\}$
 $B = \{1, 2, 3, 4, 5\}$



b) $A = \{2, 4, 5, 8\}$
 $B = \{1, 2, 3, 4, 5\}$



299



307.

$$A = \{2, 3, 4, 7\}$$

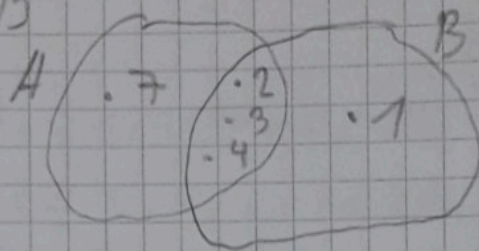
$$B = \{k \mid k \in \mathbb{N} \wedge k < 5\}$$

$$B = \{1, 2, 3, 4\}$$

$$M = \{m \mid m \in \mathbb{N}_0 \wedge 0 < m < 8\}$$

$$M = \{1, 2, 3, 4, 5, 6, 7\}$$

a) $A \cap B$



$$A \cap B = \{2, 3, 4\}$$

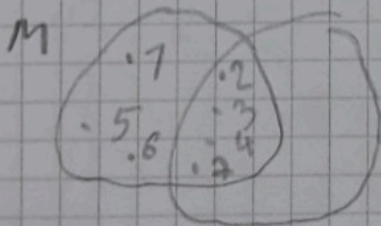
b)

$$A \setminus B = \{7\}$$

$$B \setminus A = \{1\}$$

$$A \cup B = \{1, 2, 3, 4, 7\}$$

*) $M \setminus A$



$$M \setminus A = \{1, 5, 6\}$$

$$A \setminus M = \emptyset$$

$$A \subset M$$

Роман

297 B

300. B